

# Gillespi Business Center

2135 Defoor Hills Road & 2144/48 Hills Ave.  
Atlanta, GA 30318

7,325 Square Feet with 1,373sf of Office  
and 5,952sf Studio Space with Cyc Wall

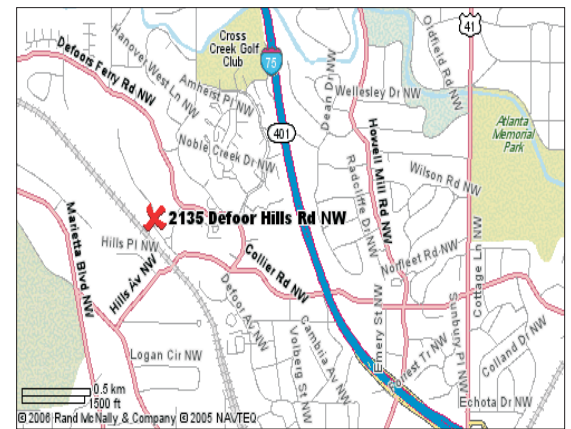


## 2144 Hills Avenue, Suite A

Located just off Collier Road, Close to I-75, I-85, Downtown and the Chattahoochee Industrial/Westside Design District.

### Amenities Include:

- 100% Air Conditioned Space
- 600 amp 3 phase electrical panel
- Covered Common Dock High and Rear Drive-In Loading.
- Ceiling height: 14' clear
- Parking: 2 per 1,000 sf
- Common Expenses \$1.68 apsf
- Rental Rate: \$ 6.60 apsf nnn
- 3% Annual Escalations

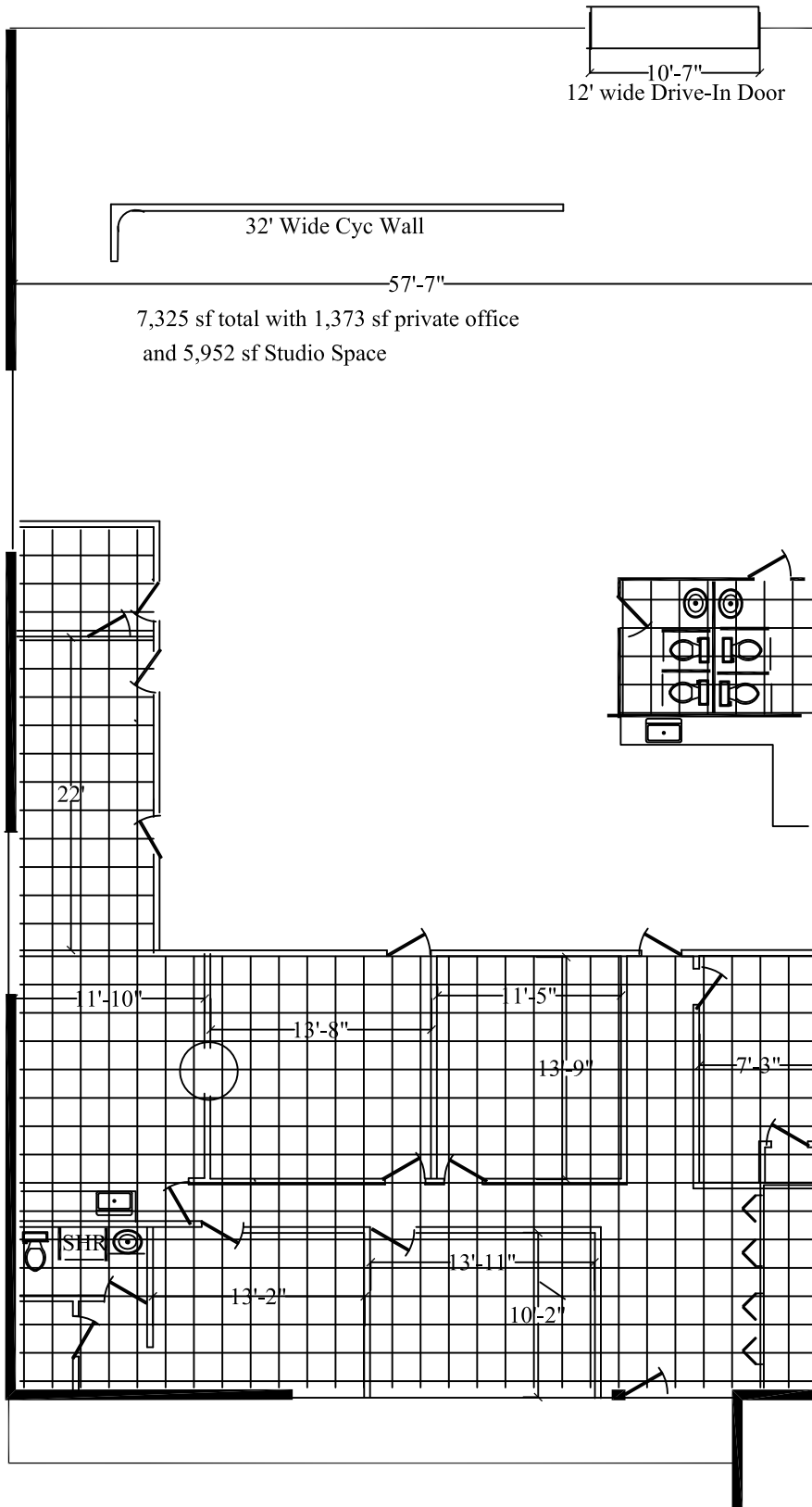


For More Information - Contact: Tom Puett or Deshion Crawford

**MEWS**  
DEVELOPMENT

2135 Defoor Hills Road, Ste. K2 Atlanta, GA 30318  
tom@mewsdevelopment.com deshion@mewsdevelopment.com  
www.mewsdevelopment.com  
404.355.1505

Covered Drive-In Corridor



7,325 sf total with 1,373 sf private office  
and 5,952 sf Studio Space

